

CITY OF PORT COQUITLAM

ROAD CLOSURE AND REMOVAL OF HIGHWAY DEDICATION BYLAW FOR  
PRINCE STREET ROAD ALLOWANCE, 2025

Bylaw No. 4386

---

The Council of the Corporation of the City of Port Coquitlam enacts as follows:

1. CITATION

This Bylaw is cited as “Road Closure and Removal of Highway Dedication Bylaw for Prince Street Road Allowance Bylaw, 2025, No. 4386.

2. ADMINISTRATION

2.1 The portion of road shown in heavy outlined areas on Reference Plan EPP141598 which was prepared on the 3<sup>rd</sup> day of October, 2024, by Matthew C. Onderwater, a certified British Columbia Land Surveyor, and is included in Schedule 1 of this Bylaw, is permanently closed to traffic.

2.2 The dedication of ‘Highway’ is now removed from the said portion of road included within the heavy outlined area shown on Reference Plan EPP141598.

READ A FIRST TIME this	day of	, 2025
READ A SECOND TIME this	day of	, 2025
READ A THIRD TIME this	day of	, 2025
ADOPTED this	day of	, 2025

---

Mayor

---

Corporate Officer

# SCHEDULE 1

**REFERENCE PLAN TO ACCOMPANY CITY OF PORT COQUITLAM ROAD CLOSURE AND CANCELLATION BYLAW #4386 OF ROAD DEDICATED ON PLAN EPP141597 AND PART OF ROAD DEDICATED ON PLAN 20011, ALL OF DISTRICT LOT 232, GROUP 1, N.W.D.**

**PLAN EPP141598**

PURSUANT TO SECTION 180 OF THE LAND TITLE ACT  
PURSUANT TO SECTION 40 OF THE COMMUNITY CHARTER  
**BCGS 92G.027**

SCALE 1:500

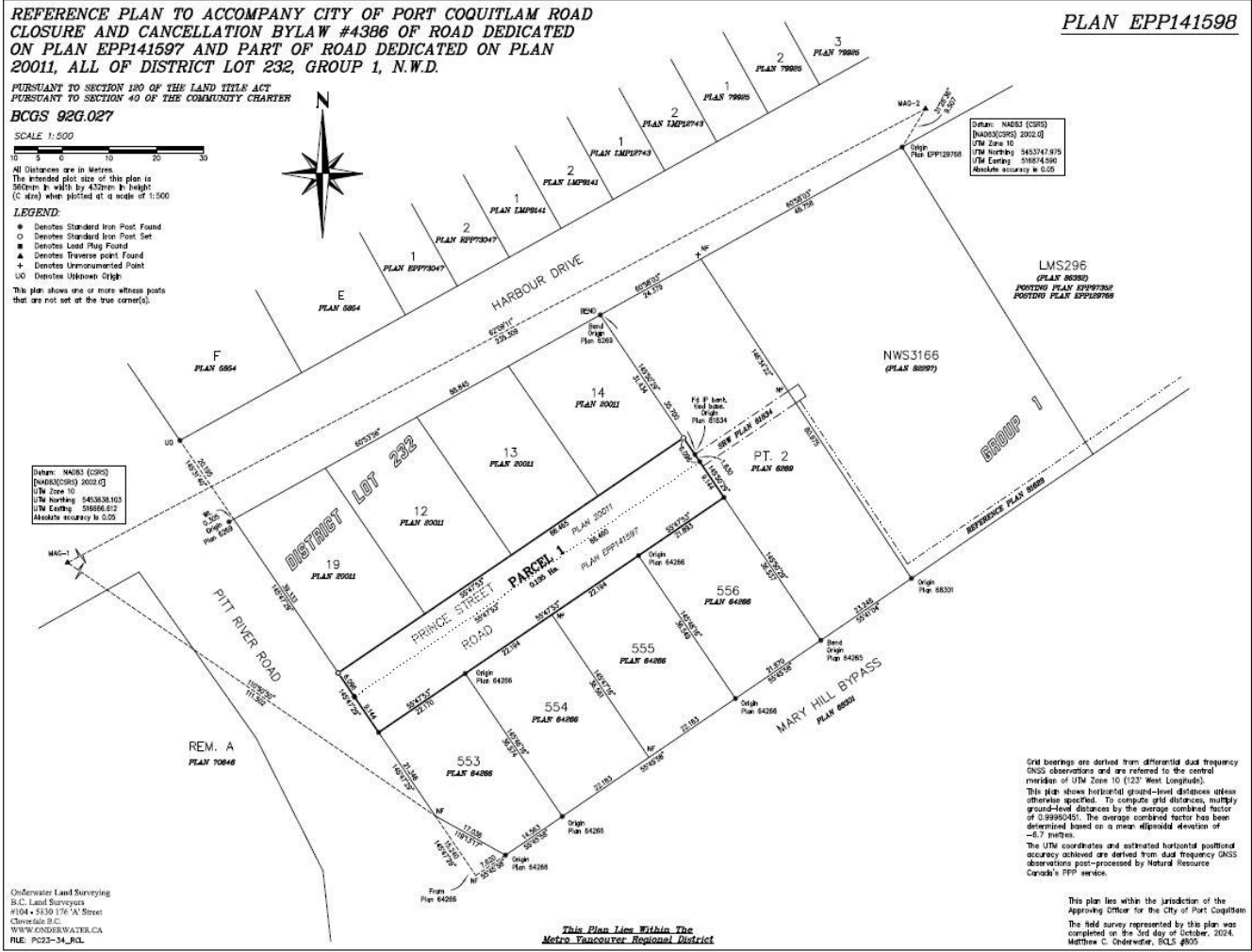
All Distances are in Metres

The intended plot size of this plan is 500mm by width by 450mm by height (C size) when printed at a scale of 1:500

**LEGEND:**

- Denotes Standard Iron Post Found
  - Denotes Standard Iron Post Set
  - Denotes Lead Plug Found
  - ▲ Denotes Traverse point Found
  - + Denotes Unmonumented Point
  - UV Denotes Unknown Origin
- This plan shows one or more witness points that are not set of the true corner(s).

From: NAD83 (CSRS)  
[NAD83(CRS) 2002 (3)]  
UTM Zone 10  
UTM Northing 5463367.975  
UTM Easting 518674.596  
Absolute accuracy is 0.02



Old bearings are derived from differential dual frequency GNSS observations and are referred to the central meridian of UTM Zone 10 (123° West Longitude).  
This plan shows horizontal ground-level distances unless otherwise specified. To compute grid distances, multiply ground-level distances by the average combined factor of 0.99999405. The average combined factor has been determined based on a mean ellipsoidal elevation of -8.7 metres.  
The UTM coordinates and estimated horizontal positional accuracy achieved are derived from dual frequency GNSS observations post-processed by Natural Resource Canada's PPP service.

*This Plan Lies Within The  
Metro Vancouver Regional District*

Underwater Land Surveying  
B.C. Land Surveyors  
#104 - 5530 176<sup>th</sup> A Street  
Coquitlam, B.C.  
WWW.UNDERWATER.LCA  
FILE: P023-34\_RCL

This plan lies within the jurisdiction of the  
Approving Officer for the City of Port Coquitlam  
The field survey represented by this plan was  
completed on the 3rd day of October, 2024.  
Matthew C. Underwater, BCLS #905